



» STERILIZATION CONTAINERS «





Tekno-Medical Optik Chirurgie GmbH

Sattlerstrasse 11
78532 Tuttlingen
Germany

Phone : +49 (0) 7461 / 17 01 - 0

Mail : mail@tekno-medical.com

Web : www.tekno-medical.com



Contents

1 Scope 4

2 General characteristics 4

2.1 Stainless steel models 4

2.2 Models made of aluminum 4

2.2.1 Soft anodizing 4

2.2.2 Hard anodizing 4

2.3 Hole for the seal 4

2.4 Identification 4

2.5 Handles 4

2.6 Filter holder 4

2.7 Filter mounting system 4

2.8 Protected filter 4

3 Model variants 5

3.1 Standard model 5

3.2 Window model 5

3.3 Barrier, filter and valve models 5

3.4 Non-perforated floors 6

3.5 Perforated floors 6

3.6 Safety lid 6

3.7 Baskets 6

3.8 Wire shelves 6

4 Instructions 7

4.1 Filter replacement 7

4.2 Loading the containers 7

4.3 Security 7

4.4 Instructions regarding loading the autoclave 8

4.5 Control 8

4.6 Cooling the containers 8

4.7 Storage 8

4.8 Transport 8

4.9 Opening the container 8

4.10 Closing the container 9

5 Life Span 9

5.1 Container 9

5.2 Cover seal 9

5.3 Filter holder 9

5.4 Filter 9

6 Examinations 10

6.1 Lid seal 10

6.2 Filter holder seal 10

6.3 Filter 10

6.4 Checking the valve filter 11

6.5 Testing the barrier model 11

6.6 Closures 11

7 Maintenance 12

7.1 Lubrication of the closures 12

7.2 Replacing the cover seal 12

7.3 Leak test 12

7.4 Replacing the filter modules 12

7.5 Replacing the filter holder (paper filter) 13

8 Cleaning & Disinfection 13

8.1 Mechanical cleaning 13

8.2 Mechanical (thermal) disinfection 14

9 Sterilization 14

9.1 Testing after sterilization 14

10 Reporting product problems 15

11 Warranty 15

12 Service and repair 15

13 Symbols 15

14 Article list 16





In order to keep risks to patients, users or third parties as low as possible, the instructions for use must be followed carefully. The use, preparation and testing of the products may only be carried out by trained specialists. The entire instructions for use must be read before using the products.



The sterilization containers and their accessories are delivered non-sterile and must undergo the complete processing cycle (cleaning, disinfection and sterilization) before the first and each subsequent use (the paper filters are excluded from this).

1 SCOPE



These instructions for use are valid for the sterilization containers with accessories (hereinafter referred to as “containers”) of Tekno-Medical Optik-Chirurgie GmbH (Tekno-Medical).
(See item list in the last paragraph of this manual.)

2 GENERAL CHARACTERISTICS

2.1 Stainless steel models

This container model is mainly made of stainless steel 1.4310, as it has a high resistance to wear and corrosion, which ensures the product has a long service life.

2.2 Models made of aluminum

This container model is mainly made of anodized aluminum, the main features of which are its low weight and high thermal conductivity.

2.2.1 Soft anodizing

Soft anodizing is a common process that hardens the aluminum surface and makes it steam-resistant. This process allows the lid to be colored in different ways (green, red, blue and yellow).

2.2.2 Hard anodizing

Hard anodizing makes the container surface more abrasion-resistant while maintaining the same thermal conductivity of the material. Only one color (green/brown) is possible.

2.3 Hole for the seal

The locking levers have holes for disposable seals and lead seals, so that premature opening of the container can be indicated. The seal is an accessory of the container (it is ordered separately, tk 86500-60)

2.4 Identification

In order to identify the containers quickly and easily, two small labels can be inserted into the corresponding holders. A disposable paper label can also be inserted into the label pocket provided.

2.5 Handles

Each container has two handles. These are made of stainless steel and partly covered with a silicone tube. The handles and their fastening system can carry a load of up to 50 kg.

2.6 Filter holder

The filter attachment system is equipped with a silicone seal that allows the use of disposable paper filters or reusable filters. The filter holder is made of hard, oxidized aluminum and stainless steel.

2.7 Filter mounting system

The filter fastening system allows for easy, quick and safe filter replacement. The filter holders can be easily removed for cleaning or inspection.

2.8 Protected filter

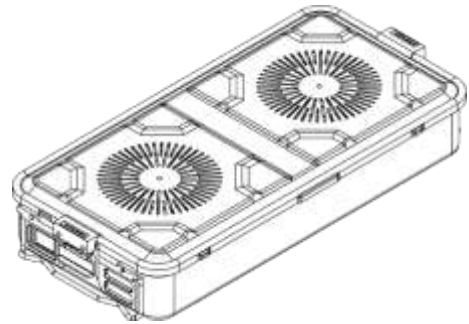
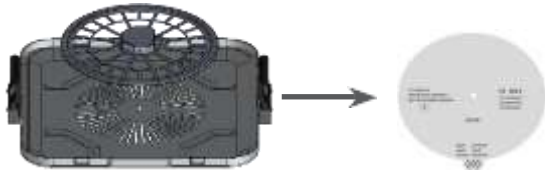
The double lid protects the filters from foreign substances and condensation from other containers.



3 MODEL VARIANTS

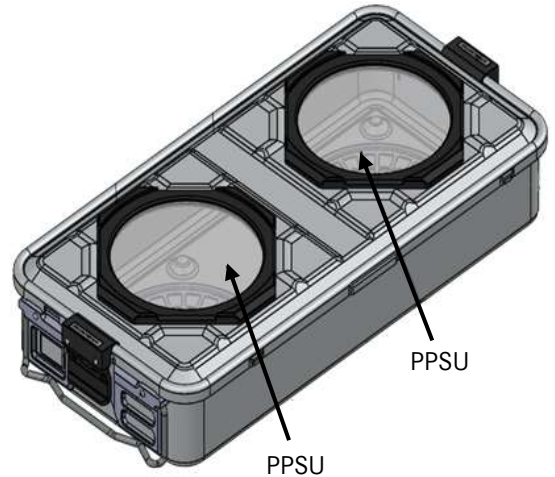
3.1 Standard model

The standard models are designed to ensure ideal steam flow and penetration for corresponding loads. The standard models can be equipped with disposable paper filters or reusable PTFE filters.

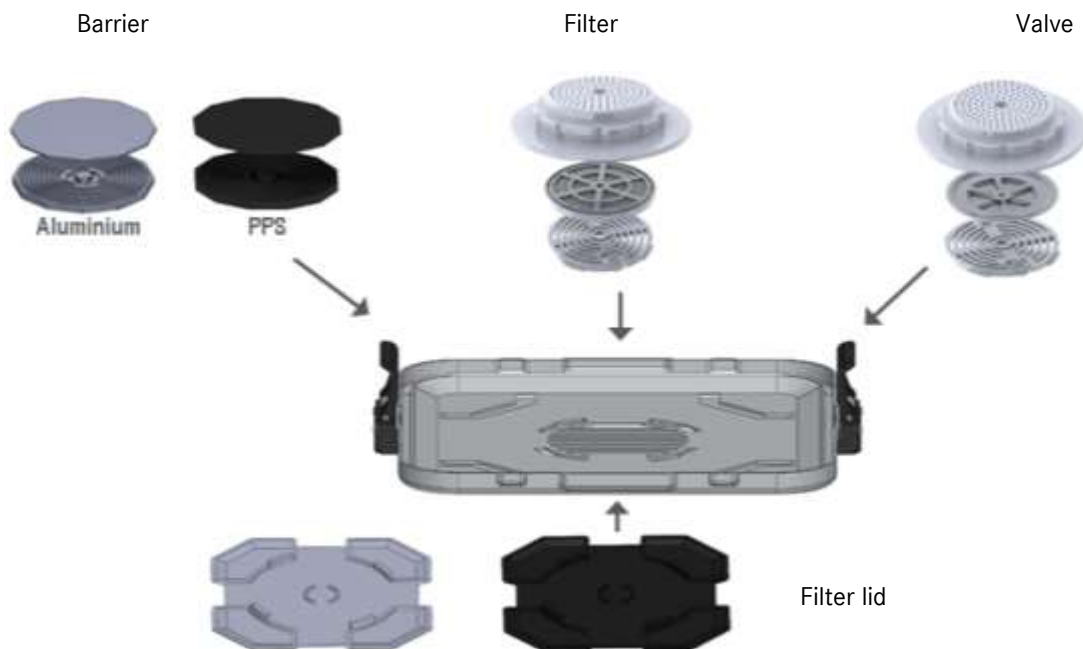


3.2 Window model

The window models are equipped with transparent windows made of PP equipped. This allows the container contents to be checked without opening the lid is possible.



3.3 Barrier, filter and valve models





3.4 Non-perforated floors

The non-perforated bottoms are intended for sterilization together with perforated lids. Non-perforated bases and non-perforated lids may only be used for transport purposes.

3.5 Perforated floors



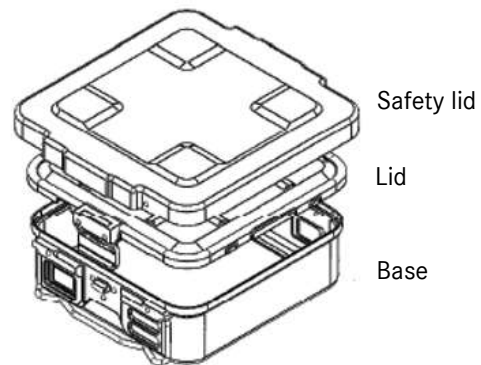
Filter model (Paper)

Barrier model

Valve model PTFE filter model

3.6 Safety lid

The safety lid is intended to protect the container and its contents from contamination during storage and transport.



Safety lid

Lid

Base

3.7 Baskets



Wire mesh basket



Wire sheet basket



Perforated metal basket

The baskets are used for grouping in the container, transporting and washing instruments.



3.8 Wire shelves

Tekno-Medical recommends the use of wire bottoms in containers with perforated bottoms to enable/optimize steam flow.





4 INSTRUCTIONS

4.1 Filter replacement

To replace the filter, proceed as follows:

- Press and lift the locking elements of the filter holder,
- remove the used filter.
- insert new filter,
- Position the filter holder in the appropriate guides, press downwards and press PUSH with your fingers until the locking devices click into place.

Complete tightness is ensured when the filter protrudes all the way around from under the sealing edge.

Tekno-Medical guarantees the tightness of its containers only when the original Tekno-Medical filters are used.

4.2 Loading the containers

Place the load in the containers so that there is enough space for steam to enter and circulate. For metal loads, we recommend using wire baskets with accessories for dividing and securing the instruments. Do not stack the containers.

Do not exceed the maximum load corresponding to the container size.

| External dimensions (mm) | | | Max. gross weight of contents (Kg) | |
|--------------------------|-------|--------|------------------------------------|----------|
| length | Width | Height | metal | Material |
| 600 | 300 | 260 | 10 | 7.5 |
| | | 210 | 8.1 | 6.1 |
| | | 160 | 6.2 | 4.6 |
| | | 135 | 5.2 | 3.9 |
| | | 110 | 4.2 | 3.2 |
| 460 | 300 | 260 | 7.7 | 5.8 |
| | | 210 | 6.2 | 4.6 |
| | | 160 | 4.7 | 3.5 |
| | | 135 | 4.0 | 3.0 |
| | | 110 | 3.2 | 2.4 |
| 300 | 300 | 260 | 5.0 | 3.8 |
| | | 210 | 4.0 | 3.0 |
| | | 160 | 3.1 | 2.3 |
| | | 135 | 2.6 | 1.9 |
| | | 110 | 2.1 | 1.6 |

When loaded with instruments wrapped in fabric:

- Place the folded fabric panels vertically in the container.
- When the container is full, the outstretched hand must still be slightly between the fabric panels can be pushed.
- The fabric panels must not cover the holes.



4.3 Security

Attach the seal or lead and insert the disposable paper label with indicator into the corresponding pocket.



4.4 Instructions regarding loading the autoclave

Remember that autoclaves are designed to accommodate specific maximum loads. Larger loads may affect the drying performance of your autoclave. Distribute the loaded material evenly and, if possible, without overlapping it. For this purpose, appropriate loading positioning systems could be used. If other containers are present, make sure they are stacked correctly so as not to affect the steam circulation. If the sterilizer is loaded with paper packaging or bags, make sure they do not block the steam inlet openings.

Do not place the loaded material directly on the bottom of the container. The use of a wire basket allows better steam circulation and, consequently, better drying.

In this way, the formation of condensation is reduced throughout the entire sterilization cycle.

4.5 Control

Leave as little free space as possible inside the container. The load should generally take up between 50 - 90% of the usable height to ensure correct steam circulation.

4.6 Cooling the containers

After sterilization, do not place warm containers on cold surfaces. If necessary, use grids to reduce the effects of condensation. It is best to let the containers cool down in the autoclave itself by opening the unloading door slightly. This prevents new condensation from forming due to the sudden change in temperature during unloading.

4.7 Storage

Store the containers in clean, dust-free places to avoid any risk of contamination. To ensure a sterility period of 6 months, please observe the following:

- store in a dust-free place,
- Storage must be carried out at controlled temperature, humidity and pressure (20 - 60°C, 10 - 70% Rh, 500 - 1060 hPa),
- the surfaces of the storage room must be smooth and easy to disinfect,
- the lowest shelf of the shelves should be at least 30 cm from the floor,
- Control air currents.

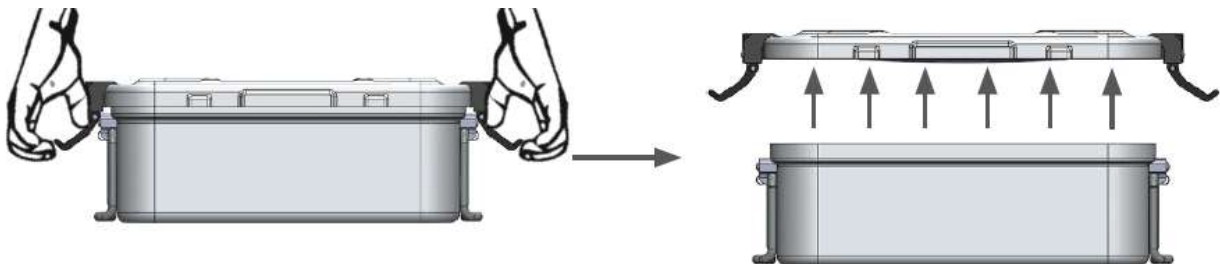
4.8 Transport

We recommend the use of dust-proof trolleys to limit any risk of contamination during transport as much as possible.

4.9 Opening the container

Before opening the container, make sure that the container and its contents have undergone a complete reprocessing cycle by checking the indicator on the label and the integrity of the seal.

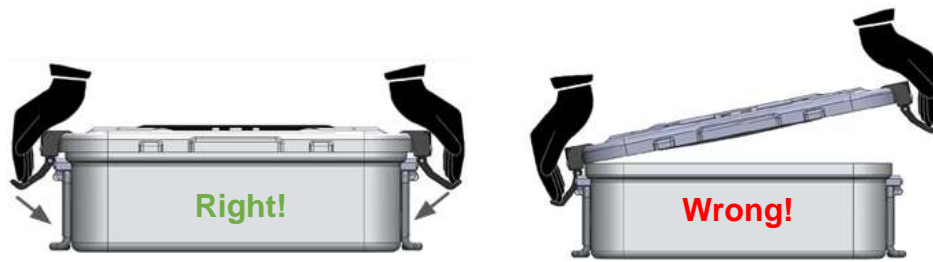
Open both locks of the container and lift the lid evenly from the container floor.





4.10 Closing the container

The container may only be closed after the lid has been correctly (completely and evenly) placed on the box. If the lid is not fully seated, it will exert uneven pressure on the container floor. Sealing the container and creating the sterile barrier will then not be possible.



5 LIFE SPAN

5.1 Container

The service life of the container is over 2,000 cycles if the container has been used properly and is not damaged.

5.2 Cover seal

The cover seal has a service life of 2,000 cycles. However, it is recommended that the seal be replaced after 5 years at the latest or in case of defects.

5.3 Filter holder

The filter holder has a service life of over 2,000 cycles if the container has been used correctly and is damaged. The service life depends on the proper functioning of the filter holder and the integrity of the seal.

5.4 Filter

The following filters can be used with our containers.

| Model series | filter | Cycles | Article no. |
|--------------------|-----------------------------------|------------|-------------|
| Classic | Paper filter with steam indicator | Single-use | tk87020-00 |
| | PTFE filter | 2.000 | tk87022-00 |
| Tristar | PTFE filters | 5.200 | tk87022-10 |
| | barrier | unlimited | tk87022-11 |
| | valve | unlimited | tk87022-12 |
| Mini Dental | Paper filter with steam indicator | Single-use | tk87020-03 |
| | PTFE filter | 2.000 | tk87022-03 |

Please note: The cleaning of the material to be sterilized and the properties of the steam can affect the life of the filters.

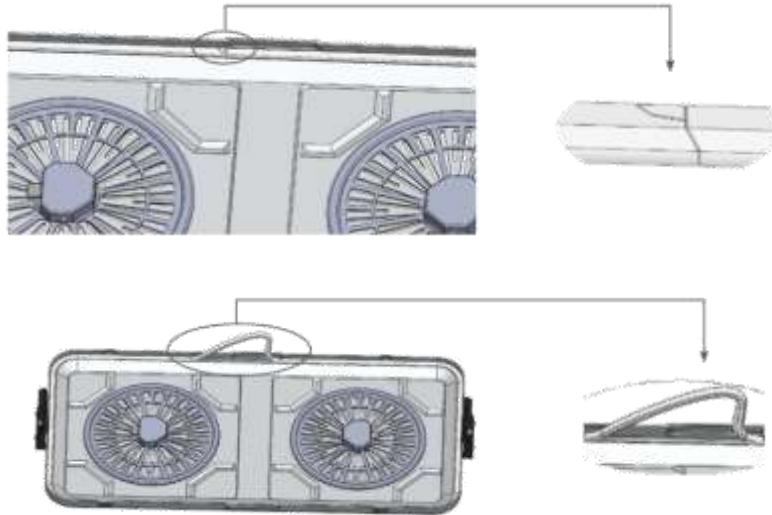


6 EXAMINATIONS

6.1 Lid seal

Before using the container, check:

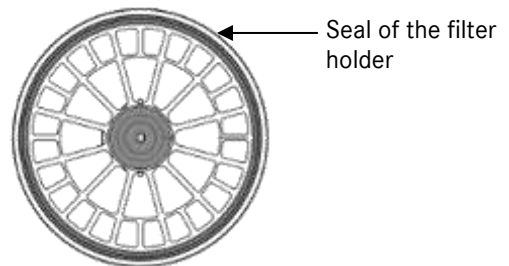
- whether the seal has cuts,
- whether the seal is sufficiently elastic,
- whether the seal is completely in the groove of the cover.



6.2 Filter holder seal

Before each sterilization process, the following must be checked:

- whether the seal has cuts,
- whether the seal is sufficiently elastic,
- whether the seal is intact and has not come loose.



6.3 Filter

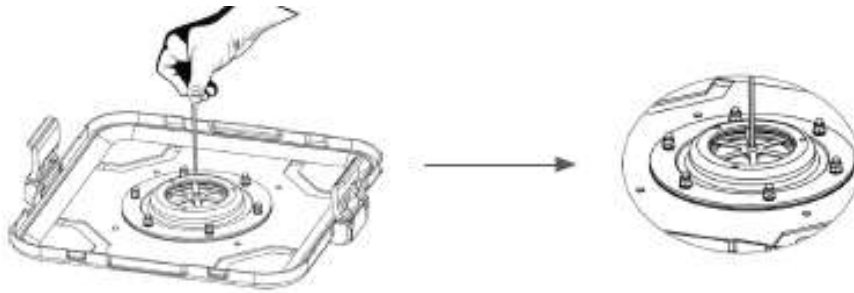
Before each sterilization cycle, check:

- whether the filter protrudes evenly under the seal all around,
- whether the filter is positioned correctly,
- whether there are any cuts or wrinkles,
- whether disposable filters have already been used or the service life of the other filters has already been exceeded.



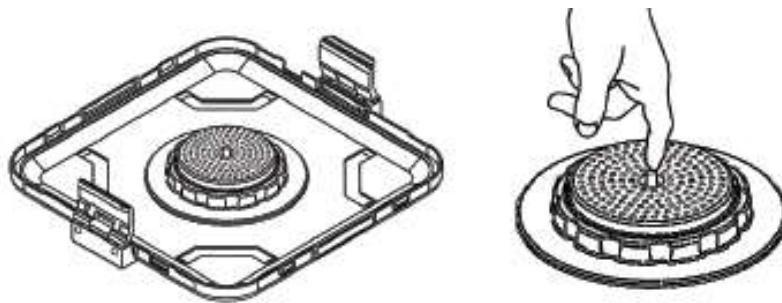
6.4 Checking the valve filter

For models with a valve filter, check that it is working properly before loading the container. To do this, press the center of the valve (on the underside of the filter) with a pointed object. If the mechanism moves, the valve system is working properly.



6.5 Testing the barrier model

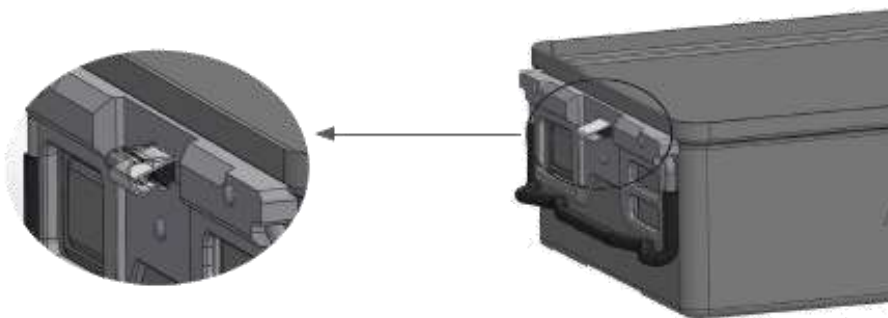
For models with a barrier filter, check that it is functioning properly before loading the container. To do this, press the pin in the middle of the system (on the underside of the filter) with your finger. If the mechanism moves, the valve system is working properly.



6.6 Closures

Before using the container, check:

- whether the closure is not damaged,
- whether the pressure exerted by the closure on the seal is sufficient,
- whether the locking levers sufficiently resist light attempts to open them.



The lid does not close the container properly if the fasteners are bent or broken.

Sealing the container and creating a sterile barrier are then not possible!



7 MAINTENANCE

7.1 Lubrication of the closures

At regular intervals or immediately after the flushing cycle, lubricate the closures with the lubricating oil for the usual lubrication of the equipment.

7.2 Replacing the cover seal

The cover seal must be replaced if it is damaged or no longer sufficiently elastic.

In any case, it is advisable to have the seal replacement and the leak test carried out by personnel authorized by Tekno-Medical.

7.3 Leak test

To ensure that the replacement has been carried out correctly and to check that the container is leak-proof, the following simple test can be carried out.

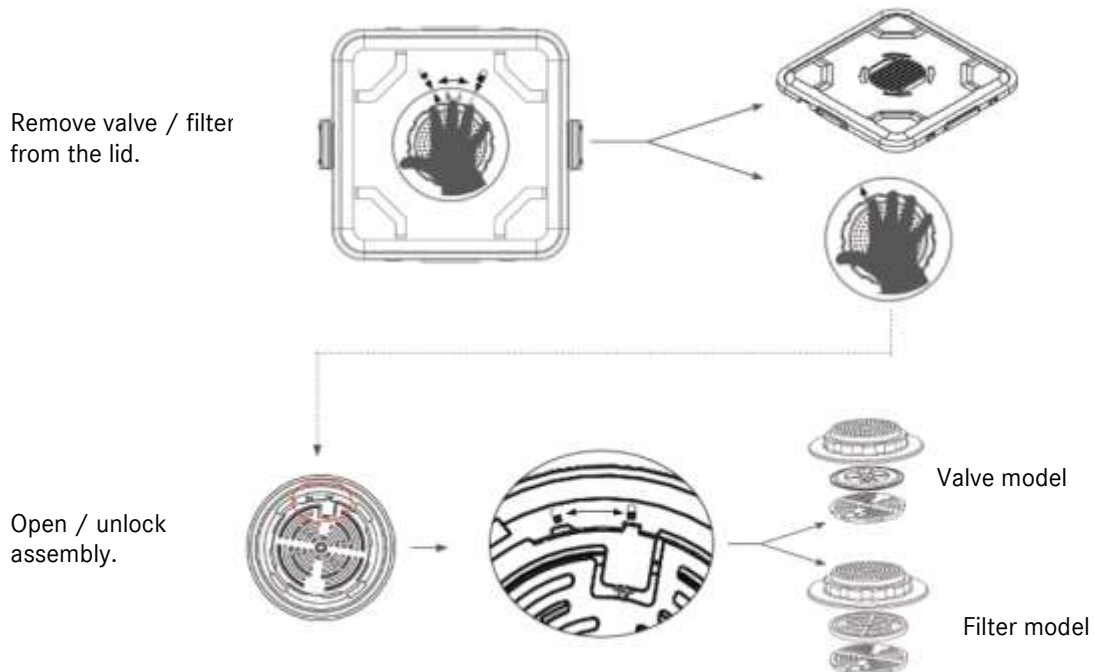
Place strips of paper or foil about 3 cm wide on the edge of the container (corresponding to the middle and the corners). Put the lid on and close it. Then gently pull on the strips. If they offer some resistance, this means that the seal is properly attached to the container body and that the seal is therefore sealed. If, on the other hand, the strips can be easily pulled out, the position of the seal must be checked again.

NOTE : To ensure tightness, use only original replacement seals:

| Article number | container |
|----------------|-------------------------------|
| 86575-09* | Steel container 600x300 mm |
| 86577-09* | Steel container 450x300mm |
| 86575-09* | Steel container 300x300 mm |
| 86574-06 | Aluminum container 600x300 mm |
| 86577-06 | Aluminum container 450x300mm |
| 86574-06 | Aluminum container 300x300mm |

7.4 Replacing the filter modules

The valves or filter cassettes are replaced as shown:

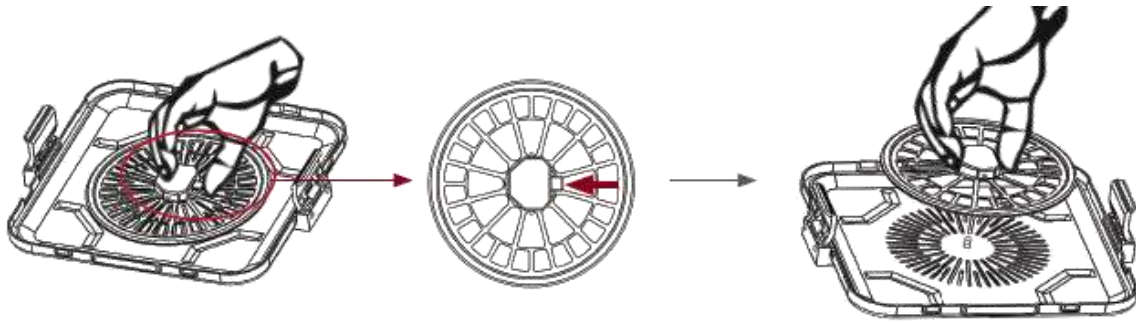




7.5 Replacing the filter holder (paper filter)

The filter holder should be replaced every time:

- the seal is damaged or has come loose,
- the closing springs do not close sufficiently, the service life has expired.



8 CLEANING & DISINFECTION

Before cleaning, remove all removable parts of the container, paper labels, metal plates. Remove the filters before cleaning.

To clean the containers, use only products with a neutral pH value (PH7-8) and rinse thoroughly with demineralized water to remove all cleaning agent residues.

During use and cleaning, avoid any contact with detergents, disinfectants or other liquids containing chlorides or sodium, as these will damage stainless steel and aluminum.

Alkaline cleaning agents can damage the aluminum containers. Do not use an abrasive sponge as this could damage the container surface. Seals and filter holders can be cleaned using cotton wool soaked in alcohol. Do not stick adhesive tape on the containers.

Never use metal brushes, metal sponges or abrasive cleaning agents for manual cleaning/pre-cleaning. Strongly alkaline cleaning agents damage plastics and anodized coatings.

The instruments must not be sterilized in hot air sterilizers. Do not use caustic cleaning agents. Do not use strongly oxidizing cleaning agents.

Reusable filters can be cleaned manually with a soft sponge or brush. Always clean the filters in a way that does not cause damage. Never use reusable filters if they show signs of breakage, cracks or other damage. Reusable filters should be dried thoroughly after cleaning. **Never use damp filters!**

8.1 Mechanical cleaning

| Step | parameter | |
|----------------|-----------------------------------|--|
| Pre-rinse | Rinse temperature + water quality | Cold city water |
| | Exposure time | 60s |
| Pre-rinse | Rinse temperature + water quality | Cold city water |
| | Exposure time | 180s |
| Clean | Cleaning temperature | 45°C |
| | Water quality | City water |
| | Exposure time | 300 s (worst case condition) RKI recommendation 600 s |
| | Cleaning products concentration | Neodisher Medizym 0.50% |
| Neutralization | Rinse temperature | 40°C |
| | Water quality | City water |
| | Exposure time | 180s |
| | Neutralizing agent concentration | Neodisher Z 0.10% |
| Rinse | Rinse temperature | 40°C |
| | Water quality | Demineralized water |
| | Exposure time | 120s |



8.2 Mechanical (thermal) disinfection

| Step | parameter | |
|-----------------------------|---|----------------------------|
| Thermal disinfection | Disinfection temperature | 90°C (A ₀ 3000) |
| | Water quality | Demineralized water |
| | Exposure time | 300s |
| Dry | Dry the outside of the instruments using the drying cycle of the washer/disinfector. If necessary, additional manual drying can be achieved using a lint-free cloth. Dry the cavities and channels of instruments with sterile compressed air. Allow products to cool to room temperature . | |

For UK: The washer disinfection cycle should run at a minimum of 90°C for a minimum of 1 minute.

9 STERILIZATION

Sterilization of products using fractionated pre-vacuum process (according to ISO 17665) taking into account the respective national requirements.

| Step | parameter |
|----------------------------------|-----------|
| Pre-vacuum | 3 times |
| Sterilization temperature | 134°C |
| Sterilization time | 5min |
| Drying time | 20min. |

The use of other sterilization methods is beyond our responsibility.

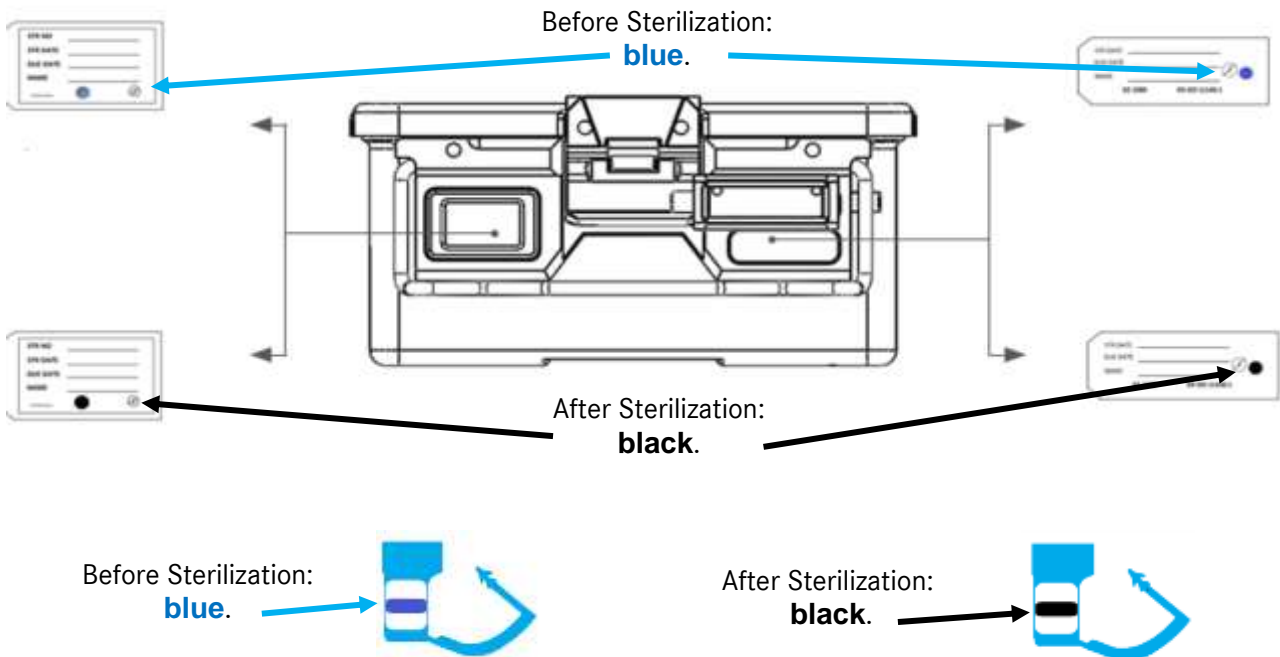
Sterilization parameters UK:

Sterilization of the instruments by applying a fractionated pre-vacuum process (according to Health Technical Memorandum 01-01 Part C):

- Heat up to a minimum sterilization temperature of 134° - 137°C (maximum temperature 137°C).
- Minimum holding time: at least 3 min.

9.1 Testing after sterilization

After sterilization has been completed, check whether the indicators used confirm this accordingly.





10 REPORTING PRODUCT PROBLEMS



In accordance with the requirements of Regulation (EU) 2017/745 on medical devices and our quality management system, all product problems must be reported to the manufacturer.

During business hours you can reach us by phone at +49 (0) 7461 / 1701-0.

Outside of regular business hours, please send an email to safety@tekno-medical.com.

Serious incidents must also be reported to the local authority responsible for their location.

11 WARRANTY

The products are manufactured from high-quality materials and undergo quality control before delivery. Should any defects occur, please contact our service department. Tekno-Medical cannot guarantee that the products are suitable for any specific procedure. This must be determined by the user. Tekno-Medical accepts no liability for accidental or consequential damages.

Tekno-Medical accepts no liability if it can be proven that these instructions for use have been violated.

Caution: In the event of use of the instruments on patients with Creutzfeldt-Jakob disease, Tekno-Medical disclaims all responsibility for reuse.

12 SERVICE AND REPAIR

Do not attempt any repairs or modifications to the product yourself. This is the sole responsibility and intended use of authorized manufacturer personnel.

Defective products must have undergone the entire refurbishment process before being returned for repair.

For returns, please use our RMA application form and decontamination certificate.

You can find the forms on our homepage: <https://www.tekno-medical.com/de/service/reparaturservice/>

13 SYMBOLS

The symbols used in this instruction and on the label have the following meaning according to DIN EN ISO 15223-1:

| | | | |
|--|-------------------------------|--|------------------------------|
| | Danger! | | Manufacturer |
| | Medical device | | Date of manufacture |
| | Non-sterile | | Observe instructions for use |
| | Catalog number | | Protect from sunlight |
| | Batch designation | | Keep dry |
| | Unique product identification | | CE mark |



14 ARTICLE LIST

REF

Printed on 26.03.2026

| | | | | | | | |
|-----------|------------|------------|------------|--------------|--------------|--------------|--------------|
| 17970-11 | 86103-70 | 86223-OSOF | 86294-OS2F | 86581-70* | 87052-01 | 88012-05 | 88170-LRC-YE |
| 17970-50 | 86103-90 | 86224-MS1F | 86295-MS1F | 87004-01 | 87052-02 | 88014-01 | 88171-B2B-SI |
| 17970-51 | 86104-45 | 86224-MS2F | 86295-MS2F | 87004-02 | 87052-03 | 88014-02 | 88171-B2F-SI |
| 17980-09 | 86104-50 | 86224-MSOF | 86295-OS1F | 87005-01 | 87052-04 | 88014-03 | 88171-B2V-SI |
| 17986-37 | 86104-70 | 86224-OS1F | 86295-OS2F | 87005-B0F-SI | 87052-05 | 88014-04 | 88175-B2V-SI |
| 17986-38 | 86104-90 | 86224-OS2F | 86296-MS1F | 87005-B1F-SI | 87053-01 | 88014-05 | 88175-L2V-BK |
| 17989-34 | 86105-50 | 86224-OSOF | 86296-MS2F | 87005-L1F-BK | 87053-02 | 88015-01 | 88175-L2V-BL |
| 17989-64 | 86105-70 | 86225-MS1F | 86296-OS1F | 87005-L1F-BL | 87053-03 | 88015-02 | 88175-L2V-GR |
| 17990-09 | 86105-90 | 86225-MS2F | 86296-OS2F | 87005-L1F-GR | 87053-04 | 88015-03 | 88175-L2V-RE |
| 24910-72 | 86106-70 | 86225-MSOF | 86297-MS1F | 87005-L1F-RE | 87053-05 | 88015-04 | 88175-L2V-SI |
| 24910-73 | 86160-MS1F | 86225-OS1F | 86297-MS2F | 87005-L1F-SI | 87054-01 | 88015-05 | 88175-L2V-YE |
| 24910-80 | 86160-MS2F | 86225-OS2F | 86297-OS1F | 87005-L1F-YE | 87054-05 | 88016-01 | 88176-B2V-SI |
| 34254-01 | 86160-MSOF | 86225-OSOF | 86297-OS2F | 87006-01 | 87055-01 | 8016-06 | 88177-B2V-SI |
| 34254-02 | 86160-OS1F | 86226-MS1F | 86300-MS1F | 87006-02 | 87055-05 | 88017-01 | 88178-B2V-SI |
| 34261-28 | 86160-OS2F | 86226-MS2F | 86300-MS2F | 87007-01 | 87100-B0F-SI | 88017-05 | 88179-B2V-SI |
| 38477-00 | 86160-OSOF | 86226-MSOF | 86300-MSOF | 87007-02 | 87100-B1F-SI | 88018-01 | 88180-B0F-SI |
| 38477-01 | 86161-MS1F | 86226-OS1F | 86300-OS1F | 87008-01 | 87100-L0F-BK | 88018-02 | 88180-B2F-SI |
| 38477-02 | 86161-MS2F | 86226-OS2F | 86300-OS2F | 87008-02 | 87100-L0F-BL | 88020-00 | 88180-B2P-SI |
| 38477-03 | 86161-MSOF | 86226-OSOF | 86300-OSOF | 87010-01 | 87100-L0F-GR | 88020-20 | 88181-B2F-SI |
| 38477-04 | 86161-OS1F | 86227-MS1F | 86301-MS1F | 87010-02 | 87100-L0F-RE | 88021-10 | 88181-B2V-SI |
| 38477-06* | 86161-OS2F | 86227-MS2F | 86301-MS2F | 87010-03 | 87100-L0F-SI | 88021-11 | 88190-B0F-SI |
| 38477-08 | 86161-OSOF | 86227-MSOF | 86301-MSOF | 87010-04 | 87100-L0F-YE | 88021-12 | 88190-B2F-SI |
| 38477-10 | 86162-MS1F | 86227-OS1F | 86301-OS1F | 87010-05 | 87100-L1F-BK | 88022-03 | 88190-B2P-SI |
| 38477-12 | 86162-MS2F | 86227-OS2F | 86301-OS2F | 87011-01 | 87100-L1F-BL | 88022-04 | 88191-B2B-SI |
| 38477-14 | 86162-MSOF | 86227-OSOF | 86301-OSOF | 87011-02 | 87100-L1F-GR | 88022-09 | 88191-B2F-SI |
| 38477-15 | 86162-OS1F | 86230-MS | 86302-MS1F | 87012-01 | 87100-L1F-RE | 88022-10 | 88191-B2V-SI |
| 38477-18 | 86162-OS2F | 86230-OS | 86302-MS2F | 87012-02 | 87100-L1F-SI | 88022-11 | 88200-B0F-SI |
| 38477-20 | 86162-OSOF | 86231-MS | 86302-MSOF | 87012-03 | 87100-L1F-YE | 88022-12 | 88200-B2F-SI |
| 38477-22 | 86163-MS1F | 86231-OS | 86302-OS1F | 87012-04 | 87105-B0F-SI | 88023-03 | 88201-B2B-SI |
| 38477-25 | 86163-MS2F | 86232-MS | 86302-OS2F | 87012-05 | 87105-B1F-SI | 88023-04 | 88201-B2F-SI |
| 38477-30 | 86163-MSOF | 86232-OS | 86302-OSOF | 87014-01 | 87106-B0F-SI | 88027-30 | 88201-B2V-SI |
| 38478-00* | 86163-OS1F | 86233-MS | 86303-MS1F | 87014-02 | 87106-B1F-SI | 88027-31 | 88210-B0F-SI |
| 38478-06* | 86163-OS2F | 86233-OS | 86303-MS2F | 87014-03 | 87110-B0F-SI | 88027-32 | 88210-B2F-SI |
| 38478-08 | 86163-OSOF | 86234-MS | 86303-MSOF | 87014-04 | 87110-B1F-SI | 88027-33 | 88211-B2B-SI |
| 38478-10 | 86164-MS1F | 86234-OS | 86303-OS1F | 87014-05 | 87115-B0F-SI | 88027-35 | 88211-B2F-SI |
| 38478-12 | 86164-MS2F | 86235-MS | 86303-OS2F | 87015-01 | 87115-B1F-SI | 88027-36 | 88211-B2V-SI |
| 38478-14 | 86164-MSOF | 86235-OS | 86303-OSOF | 87015-02 | 87116-B0F-SI | 88100-B0F-SI | 88250-B2F-SI |
| 38478-15 | 86164-OS1F | 86236-MS | 86304-MS1F | 87015-03 | 87116-B1F-SI | 88100-B1F-SI | 88250-L0W-BK |
| 38478-16* | 86164-OS2F | 86236-OS | 86304-MS2F | 87015-04 | 87120-B0F-SI | 88100-B1P-SI | 88250-L0W-BL |
| 38478-18 | 86164-OSOF | 86237-MS | 86304-MSOF | 87015-05 | 87120-B1F-SI | 88100-L0F-BK | 88250-L0W-GR |
| 38478-20 | 86165-MS1F | 86237-OS | 86304-OS1F | 87015-20 | 87125-B0F-SI | 88100-L0F-BL | 88250-L0W-RE |
| 38478-22 | 86165-MS2F | 86240-MS1F | 86304-OS2F | 87016-30 | 87125-B1F-SI | 88100-L0F-GR | 88250-L0W-SI |
| 38478-25 | 86165-MSOF | 86240-MS2F | 86304-OSOF | 87016-31 | 87125-L1F-BK | 88100-L0F-RE | 88250-L0W-YE |



| | | | | | | | |
|-----------|------------|------------|------------|------------|--------------|--------------|--------------|
| 38478-30 | 86165-OS1F | 86240-OS1F | 86305-MS1F | 87016-32 | 87125-L1F-BL | 88100-L0F-SI | 88251-B2F-SI |
| 38479-00 | 86165-OS2F | 86240-OS2F | 86305-MS2F | 87016-33 | 87125-L1F-GR | 88100-L0F-YE | 88252-B2F-SI |
| 38479-08 | 86165-OSOF | 86241-MS1F | 86305-MSOF | 87016-34 | 87125-L1F-RE | 88100-L1F-BK | 88253-B2F-SI |
| 38479-10 | 86168-MS1F | 86241-MS2F | 86305-OS1F | 87016-35 | 87125-L1F-SI | 88100-L1F-BL | 88254-B2F-SI |
| 38479-12 | 86168-MS2F | 86241-OS1F | 86305-OS2F | 87016-36 | 87125-L1F-YE | 88100-L1F-GR | 88260-B1F-SI |
| 38479-14 | 86168-OS1F | 86241-OS2F | 86305-OSOF | 87016-37 | 87130-B0F-SI | 88100-L1F-RE | 88260-L0W-BK |
| 38479-15 | 86168-OS2F | 86242-MS1F | 86306-MS1F | 87016-38 | 87130-B1F-SI | 88100-L1F-SI | 88260-L0W-BL |
| 38479-18 | 86169-MS1F | 86242-MS2F | 86306-MS2F | 87016-39 | 87135-B0F-SI | 88100-L1F-YE | 88260-L0W-GR |
| 38479-20 | 86169-MS2F | 86242-OS1F | 86306-MSOF | 87016-40 | 87135-B1F-SI | 88100-L1P-SI | 88260-L0W-RE |
| 38479-22 | 86169-OS1F | 86242-OS2F | 86306-OS1F | 87016-41 | 87136-B0F-SI | 88100-LRC-BK | 88260-L0W-SI |
| 38479-25 | 86169-OS2F | 86243-MS1F | 86306-OS2F | 87017-01 | 87136-B1F-SI | 88100-LRC-BL | 88260-L0W-YE |
| 38479-30 | 86170-MS1F | 86243-MS2F | 86306-OSOF | 87017-02 | 87140-B0F-SI | 88100-LRC-GR | 88261-B1F-SI |
| 38479-47 | 86170-MS2F | 86243-OS1F | 86307-MS1F | 87018-01 | 87140-B1F-SI | 88100-LRC-RE | 88262-B1F-SI |
| 38480-20 | 86170-OS1F | 86243-OS2F | 86307-MS2F | 87019-01 | 87140-L0F-BK | 88100-LRC-SI | 88263-B1F-SI |
| 38480-21 | 86170-OS2F | 86244-MS1F | 86307-MSOF | 87020-00 | 87140-L0F-BL | 88100-LRC-YE | 88270-B1F-SI |
| 38480-22 | 86171-MS1F | 86244-MS2F | 86307-OS1F | 87020-02 | 87140-L0F-GR | 88101-B1B-SI | 88270-L0W-BK |
| 38480-23 | 86171-MS2F | 86244-OS1F | 86307-OS2F | 87020-02N* | 87140-L0F-RE | 88101-B1F-SI | 88270-L0W-BL |
| 55210-50 | 86171-OS1F | 86244-OS2F | 86307-OSOF | 87020-03 | 87140-L0F-SI | 88101-B1V-SI | 88270-L0W-GR |
| 55210-65 | 86171-OS2F | 86245-MS1F | 86320-MS1F | 87020-03N* | 87140-L0F-YE | 88105-B0F-SI | 88270-L0W-RE |
| 55210-75 | 86172-MS1F | 86245-MS2F | 86320-MS2F | 87021-10 | 87140-L1F-BK | 88105-B1F-SI | 88270-L0W-SI |
| 55250-62 | 86172-MS2F | 86245-OS1F | 86320-OS1F | 87021-11* | 87140-L1F-BL | 88106-B0F-SI | 88270-L0W-YE |
| 55250-62* | 86172-OS1F | 86245-OS2F | 86320-OS2F | 87021-12 | 87140-L1F-GR | 88106-B1F-SI | 88271-B1F-SI |
| 55250-65 | 86172-OS2F | 86246-MS1F | 86321-MS1F | 87021-13 | 87140-L1F-RE | 88110-B0F-SI | 88272-B1F-SI |
| 55313-02 | 86173-MS1F | 86246-MS2F | 86321-MS2F | 87022-00 | 87140-L1F-SI | 88110-B1F-SI | 88273-B1F-SI |
| 55450-14+ | 86173-MS2F | 86246-OS1F | 86321-OS1F | 87022-01 | 87140-L1F-YE | 88110-B1P-SI | 88274-B1F-SI |
| 55450-16+ | 86173-OS1F | 86246-OS2F | 86321-OS2F | 87022-02 | 87145-B0F-SI | 88111-B1B-SI | 88280-2F-BK |
| 55450-17+ | 86173-OS2F | 86247-MS1F | 86322-MS1F | 87022-03 | 87145-B1F-SI | 88111-B1F-SI | 88280-2F-BL |
| 55450-19+ | 86174-MS | 86247-MS2F | 86322-MS2F | 87022-10 | 87150-B0F-SI | 88111-B1V-SI | 88280-2F-GR |
| 55450-20 | 86174-OS | 86247-OS1F | 86322-OS1F | 87022-11 | 87150-B1F-SI | 88116-B0F-SI | 88280-2F-RE |
| 55450-22+ | 86175-MS | 86247-OS2F | 86322-OS2F | 87022-12 | 87160-B0F-SI | 88116-B1F-SI | 88280-2F-SI |
| 55450-23 | 86175-OS | 86250-MS1F | 86323-MS1F | 87023-01 | 87160-B1F-SI | 88120-B0F-SI | 88280-2F-YE |
| 55450-24 | 86176-MS | 86250-MS2F | 86323-MS2F | 87023-02 | 87165-B0F-SI | 88120-B1F-SI | 88290-2F-BK |
| 55450-26+ | 86176-OS | 86250-MSOF | 86323-OS1F | 87023-03 | 87165-B1F-SI | 88120-B1P-SI | 88290-2F-BL |
| 55450-28 | 86177-MS | 86250-OS1F | 86323-OS2F | 87023-04 | 87170-B0F-SI | 88121-B1B-SI | 88290-2F-GR |
| 55450-29+ | 86177-OS | 86250-OS2F | 86324-MS1F | 87023-05 | 87170-B1F-SI | 88121-B1F-SI | 88290-2F-RE |
| 55450-32+ | 86178-MS | 86250-OSOF | 86324-MS2F | 87023-06 | 87170-L0F-BK | 88121-B1V-SI | 88290-2F-SI |
| 55450-33+ | 86178-OS | 86251-MS1F | 86324-OS | 87024-01 | 87170-L0F-BL | 88125-B0F-SI | 88290-2F-YE |
| 55450-34 | 86179-MS | 86251-MS2F | 86324-OS1F | 87024-02 | 87170-L0F-GR | 88125-B1F-SI | 88400-L0F-BK |
| 55450-36+ | 86179-OS | 86251-MSOF | 86324-OS2F | 87024-03 | 87170-L0F-RE | 88125-L1F-BK | 88400-L0F-BL |
| 55450-38+ | 86180-MS1F | 86251-OS1F | 86325-MS1F | 87024-04 | 87170-L0F-SI | 88125-L1F-BL | 88400-L0F-GR |
| 55450-39 | 86180-MS2F | 86251-OS2F | 86325-MS2F | 87027-01 | 87170-L0F-YE | 88125-L1F-GR | 88400-L0F-RE |
| 56795-00 | 86180-MSOF | 86251-OSOF | 86325-OS | 87027-02 | 87170-L1F-BK | 88125-L1F-RE | 88400-L0F-SI |
| 610-1800* | 86180-OS2F | 86252-MS1F | 86325-OS1F | 87027-06 | 87170-L1F-BL | 88125-L1F-SI | 88400-L0F-YE |
| 707-650 | 86180-OSOF | 86252-MS2F | 86325-OS2F | 87027-08 | 87170-L1F-GR | 88125-L1F-YE | 88400-L1B-BK |
| 707-651 | 86181-MS1F | 86252-MSOF | 86326-MS1F | 87027-09 | 87170-L1F-RE | 88130-B0F-SI | 88400-L1B-BL |



| | | | | | | | |
|----------|------------|------------|------------|----------|--------------|--------------|--------------|
| 707-653 | 86181-MS2F | 86252-OS1F | 86326-MS2F | 87027-10 | 87170-L1F-SI | 88130-B1F-SI | 88400-L1B-GR |
| 707-654 | 86181-MSOF | 86252-OS2F | 86326-OS | 87027-11 | 87170-L1F-YE | 88131-B1B-SI | 88400-L1B-RE |
| 707-657 | 86181-OS1F | 86252-OSOF | 86326-OS1F | 87027-12 | 87172-L1F-SI | 88131-B1F-SI | 88400-L1B-SI |
| 707-658 | 86181-OS2F | 86253-MS1F | 86326-OS2F | 87027-13 | 87180-B0F-SI | 88131-B1V-SI | 88400-L1B-YE |
| 707-659 | 86181-OSOF | 86253-MS2F | 86327-MS1F | 87027-14 | 87180-B1F-SI | 88135-B0F-SI | 88400-L1F-BK |
| 707-660 | 86182-MS1F | 86253-MSOF | 86327-MS2F | 87027-15 | 87190-B0F-SI | 88135-B1F-SI | 88400-L1F-BL |
| 707-661 | 86182-MS2F | 86253-OS1F | 86327-OS1F | 87027-22 | 87190-B1F-SI | 88136-B0F-SI | 88400-L1F-GR |
| 707-662 | 86182-MSOF | 86253-OS2F | 86327-OS2F | 87027-23 | 87192-B0F-SI | 88136-B1F-SI | 88400-L1F-RE |
| 707-663 | 86182-OS1F | 86253-OSOF | 86330-MS | 87027-24 | 87200-B0F-SI | 88137-B1B-SI | 88400-L1F-SI |
| 707-664 | 86182-OS2F | 86254-OS1F | 86330-OS | 87027-25 | 87200-B1F-SI | 88137-B1F-SI | 88400-L1F-YE |
| 707-770 | 86182-OSOF | 86254-OS2F | 86331-MS | 87027-26 | 87210-B0F-SI | 88137-B1V-SI | 88400-L1V-BK |
| 707-771 | 86185-MS1F | 86255-OS1F | 86331-OS | 87027-27 | 87210-B1F-SI | 88140-B0F-SI | 88400-L1V-BL |
| 75000-04 | 86185-MS2F | 86255-OS2F | 86332-MS | 87027-28 | 87230-2F-BK | 88140-B1F-SI | 88400-L1V-GR |
| 75000-05 | 86185-OS1F | 86256-OS1F | 86332-OS | 87027-30 | 87230-2F-BL | 88140-B1P-SI | 88400-L1V-RE |
| 75000-06 | 86185-OS2F | 86256-OS2F | 86333-MS | 87027-32 | 87230-2F-GR | 88140-L0F-BK | 88400-L1V-SI |
| 75001-04 | 86186-MS1F | 86257-OS1F | 86333-OS | 87027-34 | 87230-2F-RE | 88140-L0F-BL | 88400-L1V-YE |
| 75001-05 | 86186-MS2F | 86257-OS2F | 86334-MS | 87027-35 | 87230-2F-SI | 88140-L0F-GR | 88410-L1B-BK |
| 75001-06 | 86186-OS1F | 86270-MS1F | 86334-OS | 87027-40 | 87230-2F-YE | 88140-L0F-RE | 88410-L1B-BL |
| 75002-01 | 86186-OS2F | 86270-MS2F | 86335-MS | 87029-00 | 87240-2F-BK | 88140-L0F-SI | 88410-L1B-GR |
| 75002-02 | 86187-MS1F | 86270-MSOF | 86335-OS | 87029-01 | 87240-2F-BL | 88140-L0F-YE | 88410-L1B-RE |
| 75002-03 | 86187-MS2F | 86270-OS1F | 86336-MS | 87029-05 | 87240-2F-GR | 88140-L1F-BK | 88410-L1B-SI |
| 75002-04 | 86187-OS1F | 86270-OS2F | 86336-OS | 87031-01 | 87240-2F-RE | 88140-L1F-BL | 88410-L1B-YE |
| 75002-05 | 86187-OS2F | 86270-OSOF | 86337-MS | 87031-02 | 87240-2F-SI | 88140-L1F-GR | 88410-L1F-BK |
| 75003-03 | 86190-MS | 86272-MS1F | 86337-OS | 87031-03 | 87240-2F-YE | 88140-L1F-RE | 88410-L1F-BL |
| 75003-04 | 86190-OS | 86272-MS2F | 86370-MS1F | 87031-04 | 87280-2F-SI | 88140-L1F-SI | 88410-L1F-GR |
| 75003-06 | 86191-MS | 86272-OS1F | 86370-MS2F | 87031-05 | 87290-2F-SI | 88140-L1F-YE | 88410-L1F-RE |
| 75004-01 | 86191-OS | 86272-OS2F | 86370-MSOF | 87031-06 | 87295-00 | 88140-L1P-SI | 88410-L1F-SI |
| 75004-02 | 86192-MS | 86273-MS1F | 86370-OS1F | 87031-07 | 87295-02 | 88140-LRC-BK | 88410-L1F-YE |
| 75004-03 | 86192-OS | 86273-MS2F | 86370-OS2F | 87031-08 | 87295-20 | 88140-LRC-BL | 88410-L1V-BK |
| 75006-01 | 86200-MS1F | 86273-MSOF | 86370-OSOF | 87031-09 | 87295-21 | 88140-LRC-GR | 88410-L1V-BL |
| 75006-02 | 86200-MS2F | 86273-OS1F | 86371-MS1F | 87031-10 | 87295-30 | 88140-LRC-RE | 88410-L1V-GR |
| 75006-03 | 86200-MSOF | 86273-OS2F | 86371-MS2F | 87031-11 | 87295-40 | 88140-LRC-SI | 88410-L1V-RE |
| 75006-04 | 86200-OS1F | 86273-OSOF | 86371-MSOF | 87031-12 | 87400-L1B-BK | 88140-LRC-YE | 88410-L1V-SI |
| 75006-05 | 86200-OS2F | 86274-MS1F | 86371-OS1F | 87031-13 | 87400-L1B-BL | 88141-B1B-SI | 88410-L1V-YE |
| 75006-06 | 86200-OSOF | 86274-MS2F | 86371-OS2F | 87031-20 | 87400-L1B-GR | 88141-B1F-SI | 88411-L0F-BK |
| 75007-01 | 86201-MS1F | 86274-MSOF | 86371-OSOF | 87031-21 | 87400-L1B-RE | 88141-B1V-SI | 88411-L0F-BL |
| 75007-02 | 86201-MS2F | 86274-OS1F | 86372-MS1F | 87031-22 | 87400-L1B-SI | 88142-B1V-SI | 88411-L0F-GR |
| 75007-03 | 86201-MSOF | 86274-OS2F | 86372-MS2F | 87031-23 | 87400-L1B-YE | 88142-L0V-BK | 88411-L0F-RE |
| 75007-04 | 86201-OS1F | 86274-OSOF | 86372-MSOF | 87031-24 | 87400-L1F-BK | 88142-L0V-BL | 88411-L0F-SI |
| 75007-05 | 86201-OS2F | 86275-MS1F | 86372-OS1F | 87033-01 | 87400-L1F-BL | 88142-L0V-GR | 88411-L0F-YE |
| 75007-06 | 86201-OSOF | 86275-MS2F | 86372-OS2F | 87033-02 | 87400-L1F-GR | 88142-L0V-RE | 88420-L2B-BK |
| 75008-01 | 86202-MS1F | 86275-MSOF | 86372-OSOF | 87033-03 | 87400-L1F-RE | 88142-L0V-SI | 88420-L2B-BL |
| 75008-02 | 86202-MS2F | 86275-OS1F | 86373-MS1F | 87033-05 | 87400-L1F-SI | 88142-L0V-YE | 88420-L2B-GR |
| 75008-03 | 86202-MSOF | 86275-OS2F | 86373-MS2F | 87033-06 | 87400-L1F-YE | 88142-L1V-BK | 88420-L2B-RE |
| 75008-04 | 86202-OS1F | 86275-OSOF | 86373-MSOF | 87033-07 | 87400-L1V-BK | 88142-L1V-BL | 88420-L2B-SI |



| | | | | | | | |
|-----------|------------|------------|------------|----------|--------------|--------------|--------------|
| 75008-05 | 86202-OS2F | 86276-MS1F | 86373-OS2F | 87033-09 | 87400-L1V-BL | 88142-L1V-GR | 88420-L2B-YE |
| 75008-06 | 86202-OSOF | 86276-MS2F | 86373-OSOF | 87033-10 | 87400-L1V-GR | 88142-L1V-RE | 88420-L2F-BK |
| 75009-01 | 86203-MS1F | 86276-MSOF | 86379-MS1F | 87033-11 | 87400-L1V-RE | 88142-L1V-SI | 88420-L2F-BL |
| 75009-02 | 86203-MS2F | 86276-OS1F | 86379-MS2F | 87033-12 | 87400-L1V-SI | 88142-L1V-YE | 88420-L2F-GR |
| 75009-03 | 86203-MSOF | 86276-OS2F | 86379-OS1F | 87033-13 | 87400-L1V-YE | 88143-B1V-SI | 88420-L2F-RE |
| 75009-04 | 86203-OS1F | 86276-OSOF | 86379-OS2F | 87033-14 | 87410-L1B-BK | 88144-B1V-SI | 88420-L2F-SI |
| 75009-05 | 86203-OS2F | 86277-MS1F | 86380-MS1F | 87033-20 | 87410-L1B-BL | 88145-B0F-SI | 88420-L2F-YE |
| 75009-06 | 86203-OSOF | 86277-MS2F | 86380-MS2F | 87033-21 | 87410-L1B-GR | 88145-B1F-SI | 88420-L2V-BK |
| 75010-01 | 86204-MS1F | 86277-MSOF | 86380-OS1F | 87033-22 | 87410-L1B-RE | 88147-B1V-SI | 88420-L2V-BL |
| 75010-02 | 86204-MS2F | 86277-OS1F | 86380-OS2F | 87033-23 | 87410-L1B-SI | 88148-B1V-SI | 88420-L2V-GR |
| 75010-03 | 86204-MSOF | 86277-OS2F | 86381-MS1F | 87033-24 | 87410-L1B-YE | 88150-B0F-SI | 88420-L2V-RE |
| 75010-04 | 86204-OS1F | 86277-OSOF | 86381-MS2F | 87033-25 | 87410-L1F-BK | 88150-B1F-SI | 88420-L2V-SI |
| 75011-01 | 86204-OS2F | 86278-MS1F | 86381-OS1F | 87033-28 | 87410-L1F-BL | 88150-B1P-SI | 88420-L2V-YE |
| 75011-02 | 86204-OSOF | 86278-MS2F | 86381-OS2F | 87033-29 | 87410-L1F-GR | 88151-B1B-SI | 88421-L0F-BK |
| 75011-03 | 86205-MS1F | 86278-MSOF | 86382-MS1F | 87033-30 | 87410-L1F-RE | 88151-B1F-SI | 88421-L0F-BL |
| 75011-04 | 86205-MS2F | 86278-OS1F | 86382-MS2F | 87034-01 | 87410-L1F-SI | 88151-B1V-SI | 88421-L0F-GR |
| 75011-05 | 86205-MSOF | 86278-OS2F | 86382-OS1F | 87034-02 | 87410-L1F-YE | 88155-B1V-SI | 88421-L0F-RE |
| 75011-06 | 86205-OS1F | 86278-OSOF | 86382-OS2F | 87034-03 | 87410-L1V-BK | 88155-L0V-BK | 88421-L0F-SI |
| 75012-01 | 86205-OS2F | 86279-MS1F | 86390-MS | 87034-04 | 87410-L1V-BL | 88155-L0V-BL | 88421-L0F-YE |
| 75012-02 | 86205-OSOF | 86279-MS2F | 86390-OS | 87034-05 | 87410-L1V-GR | 88155-L0V-GR | 88700-B0F-SI |
| 75012-03 | 86206-MS1F | 86279-MSOF | 86391-MS | 87034-06 | 87410-L1V-RE | 88155-L0V-RE | 88700-L2F-BK |
| 75012-04 | 86206-MS2F | 86279-OS1F | 86391-OS | 87034-07 | 87410-L1V-SI | 88155-L0V-SI | 88700-L2F-BL |
| 75012-05 | 86206-MSOF | 86279-OS2F | 86392-MS | 87034-08 | 87410-L1V-YE | 88155-L0V-YE | 88700-L2F-GR |
| 75012-06 | 86206-OS1F | 86279-OSOF | 86392-OS | 87034-09 | 87420-L1B-BK | 88155-L1V-BK | 88700-L2F-RE |
| 75013-01 | 86206-OS2F | 86283-MS1F | 86393-MS | 87034-10 | 87420-L1B-BL | 88155-L1V-BL | 88700-L2F-SI |
| 75013-02 | 86206-OSOF | 86283-MS2F | 86393-OS | 87034-11 | 87420-L1B-GR | 88155-L1V-GR | 88700-L2F-YE |
| 75013-03 | 86207-MS1F | 86283-OS1F | 86394-MS | 87034-12 | 87420-L1B-RE | 88155-L1V-RE | 88700-LRC-BK |
| 75013-04 | 86207-MS2F | 86283-OS2F | 86394-OS | 87034-13 | 87420-L1B-SI | 88155-L1V-SI | 88700-LRC-BL |
| 75014-00 | 86207-MSOF | 86284-MS1F | 86395-MS | 87034-14 | 87420-L1B-YE | 88155-L1V-YE | 88700-LRC-GR |
| 75014-06 | 86207-OS1F | 86284-MS2F | 86395-OS | 87034-15 | 87420-L1F-BK | 88156-B1V-SI | 88700-LRC-RE |
| 75014-07 | 86207-OS2F | 86284-OS1F | 86396-MS | 87034-16 | 87420-L1F-BL | 88157-B1V-SI | 88700-LRC-SI |
| 75014-10 | 86207-OSOF | 86284-OS2F | 86396-OS | 87034-20 | 87420-L1F-GR | 88158-B1V-SI | 88700-LRC-YE |
| 75014-11 | 86210-MS | 86285-MS1F | 86397-MS | 87034-21 | 87420-L1F-RE | 88160-B0F-SI | 88701-B0F-SI |
| 75014-20 | 86210-OS | 86285-MS2F | 86397-OS | 87034-22 | 87420-L1F-SI | 88160-B1F-SI | 88705-B0F-SI |
| 790-374 | 86211-MS | 86285-OS1F | 86398-MS | 87034-23 | 87420-L1F-YE | 88160-B1P-SI | 88705-L2F-BK |
| 83138-23* | 86211-OS | 86285-OS2F | 86398-OS | 87034-24 | 87420-L1V-BK | 88161-B1B-SI | 88705-L2F-BL |
| 83147-16 | 86212-MS | 86286-MS1F | 86399-MS | 87034-25 | 87420-L1V-BL | 88161-B1F-SI | 88705-L2F-GR |
| 83147-20* | 86212-OS | 86286-MS2F | 86399-OS | 87034-26 | 87420-L1V-GR | 88161-B1V-SI | 88705-L2F-RE |
| 83147-21 | 86213-MS | 86286-OS1F | 86400-MS | 87034-27 | 87420-L1V-RE | 88165-B0F-SI | 88705-L2F-SI |
| 83147-22 | 86213-OS | 86286-OS2F | 86400-OS | 87034-28 | 87420-L1V-SI | 88165-B1F-SI | 88705-L2F-YE |
| 83147-26 | 86214-MS | 86287-MS1F | 86401-MS | 87034-29 | 87420-L1V-YE | 88165-B1P-SI | 88705-LRC-BK |
| 83147-27* | 86214-OS | 86287-MS2F | 86401-OS | 87034-30 | 87430-B0F-SI | 88166-B1B-SI | 88705-LRC-BL |
| 83147-30 | 86215-MS | 86287-OS1F | 86501-10 | 87034-31 | 87430-L1F-BK | 88166-B1F-SI | 88705-LRC-GR |
| 83147-32* | 86215-OS | 86287-OS2F | 86501-11 | 87034-32 | 87430-L1F-BL | 88166-B1V-SI | 88705-LRC-RE |
| 83147-33* | 86216-MS | 86288-MS1F | 86501-12 | 87034-33 | 87430-L1F-GR | 88170-B0F-SI | 88705-LRC-SI |



Instructions for use – please read before use

20 / 20

| | | | | | | | |
|-----------|------------|------------|-----------|----------|--------------|--------------|--------------|
| 83147-38* | 86216-OS | 86288-MS2F | 86510-16 | 87034-34 | 87430-L1F-RE | 88170-B2F-SI | 88705-LRC-YE |
| 83147-43* | 86217-MS | 86288-OS1F | 86510-21 | 87034-40 | 87430-L1F-SI | 88170-B2P-SI | 88706-B0F-SI |
| 83147-50* | 86217-OS | 86288-OS2F | 86511-16 | 87034-41 | 87430-L1F-YE | 88170-L0F-BK | 88707-B0F-SI |
| 83148-21* | 86220-MS1F | 86289-MS1F | 86511-21 | 87034-42 | 87431-B0F-SI | 88170-L0F-BL | 88710-B2F-SI |
| 85109-02 | 86220-MS2F | 86289-MS2F | 86512-16 | 87034-43 | 88005-B0F-SI | 88170-L0F-GR | 88711-B2F-SI |
| 85109-05 | 86220-MSOF | 86289-OS1F | 86512-21 | 87034-44 | 88005-B1F-SI | 88170-L0F-RE | 88715-B2F-SI |
| 85109-06 | 86220-OS1F | 86289-OS2F | 86520-16 | 87034-45 | 88005-L1F-BK | 88170-L0F-SI | 88716-B2F-SI |
| 85109-07 | 86220-OS2F | 86290-MS1F | 86520-21 | 87034-46 | 88005-L1F-BL | 88170-L0F-YE | 88717-B2F-SI |
| 85109-11 | 86220-OSOF | 86290-MS2F | 86521-16 | 87034-47 | 88005-L1F-GR | 88170-L0V-BK | 88720-01 |
| 85201-02 | 86221-MS1F | 86290-OS1F | 86521-21 | 87034-48 | 88005-L1F-RE | 88170-L0V-BL | 88720-02 |
| 86080-25 | 86221-MS2F | 86290-OS2F | 86530-16 | 87034-49 | 88005-L1F-SI | 88170-L0V-GR | 88720-03 |
| 86081-13 | 86221-MSOF | 86291-MS1F | 86530-21 | 87034-50 | 88005-L1F-YE | 88170-L0V-RE | 88720-04 |
| 86082-25 | 86221-OS1F | 86291-MS2F | 86531-16 | 87034-51 | 88006-B0F-SI | 88170-L0V-SI | 88725-01 |
| 86083-13 | 86221-OS2F | 86291-OS1F | 86531-21 | 87034-52 | 88006-L1F-SI | 88170-L0V-YE | 88725-02 |
| 86084-50 | 86221-OSOF | 86291-OS2F | 86532-16 | 87034-53 | 88010-01 | 88170-L2F-BK | 88725-03 |
| 86084-50N | 86222-MS1F | 86292-MS1F | 86532-21 | 87034-60 | 88010-02 | 88170-L2F-BL | 88725-04 |
| 86085-50 | 86222-MS2F | 86292-MS2F | 86550-05 | 87050-01 | 88010-03 | 88170-L2F-GR | Z0000129635 |
| 86085-70* | 86222-MSOF | 86292-OS1F | 86550-12 | 87050-02 | 88010-04 | 88170-L2F-RE | Z0000130209 |
| 86090-34 | 86222-OS1F | 86292-OS2F | 86550-20 | 87050-03 | 88010-05 | 88170-L2F-SI | Z0000130819 |
| 86099-70N | 86222-OS2F | 86293-MS1F | 86550-45 | 87050-04 | 88011-01 | 88170-L2F-YE | Z0000130821 |
| 86100-50 | 86222-OSOF | 86293-MS2F | 86555-85 | 87050-05 | 88011-02 | 88170-L2P-SI | Z0000131133 |
| 86101-50 | 86223-MS1F | 86293-OS1F | 86560-50 | 87051-01 | 88011-05 | 88170-LRC-BK | Z0000131360 |
| 86101-70 | 86223-MS2F | 86293-OS2F | 86570-01 | 87051-02 | 88012-01 | 88170-LRC-BL | |
| 86101-90 | 86223-MSOF | 86294-MS1F | 86576-06 | 87051-03 | 88012-02 | 88170-LRC-GR | |
| 86102-50 | 86223-OS1F | 86294-MS2F | 86581-60* | 87051-04 | 88012-03 | 88170-LRC-RE | |
| 86103-50 | 86223-OS2F | 86294-OS1F | 86581-61 | 87051-05 | 88012-04 | 88170-LRC-SI | |

